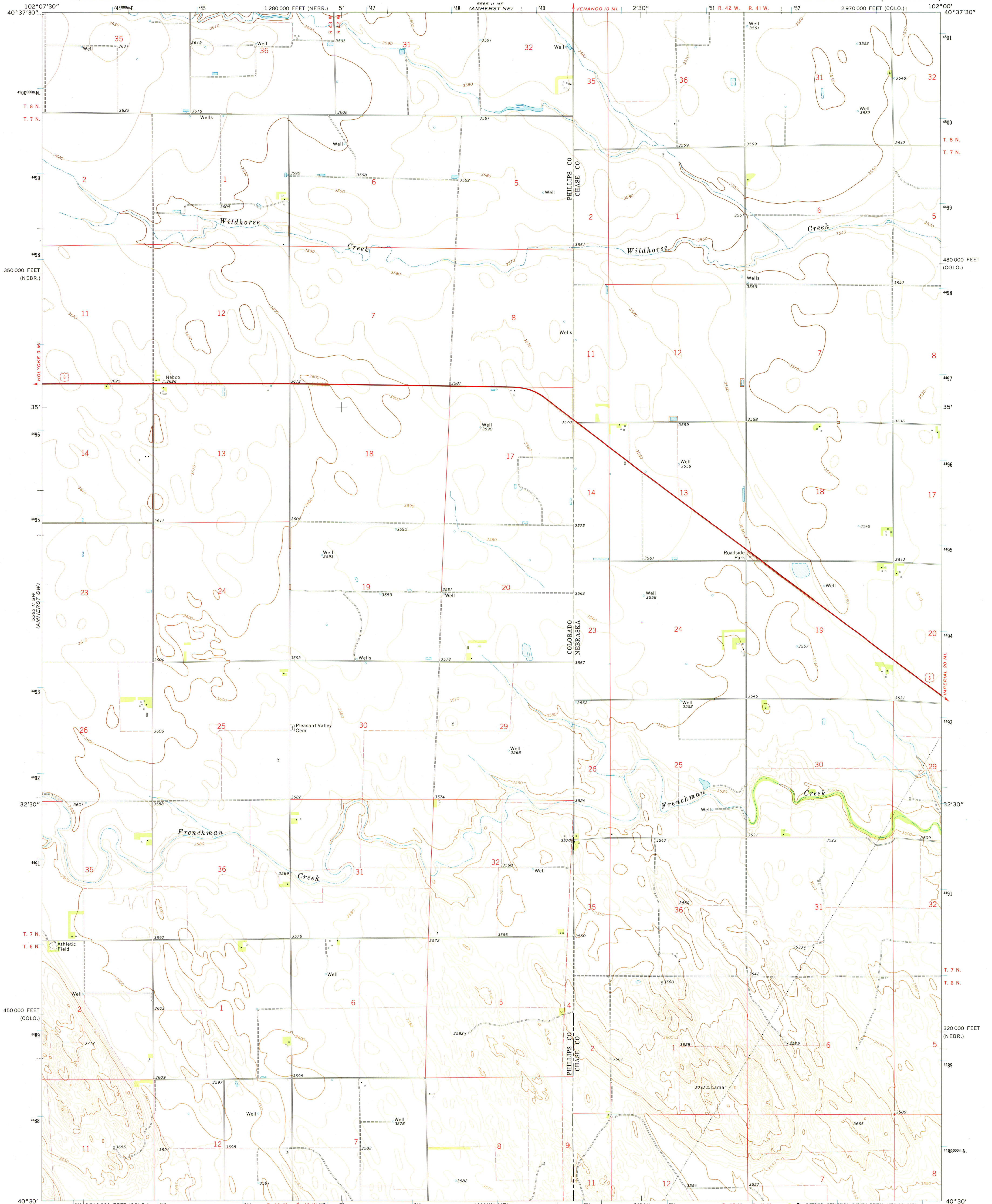


5565 II SE (LAMAR SW)

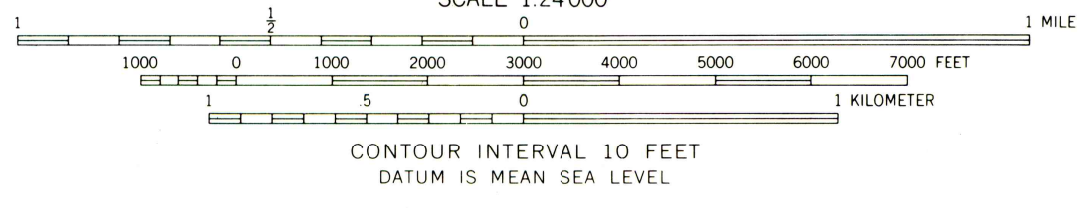
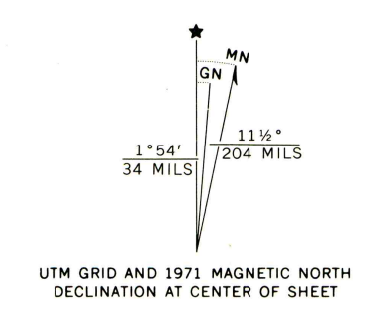
UNITED STATES
DEPARTMENT OF THE INTERIOR
GEOLOGICAL SURVEY

AMHERST SE QUADRANGLE
COLORADO-NEBRASKA
7.5 MINUTE SERIES (TOPOGRAPHIC)

5565 II NW (LAMAR NW)



Mapped, edited, and published by the Geological Survey
Control by USGS and USC&GS
Topography by photogrammetric methods from aerial photographs taken 1970. Field checked 1971
Projection: Colorado coordinate system, north zone (Lambert conformal conic)
10,000-foot grid ticks based on Colorado coordinate system, north zone and Nebraska coordinate system, south zone
1000-meter Universal Transverse Mercator grid ticks, zone 13, shown in blue. 1927 North American datum
Fine red dashed lines indicate selected fence lines



ROAD CLASSIFICATION

Primary highway, hard surface	Light duty road, hard or improved surface
Secondary highway, hard surface	Unimproved road
Interstate Route	U. S. Route
	State Route



THIS MAP COMPLIES WITH NATIONAL MAP ACCURACY STANDARDS
FOR SALE BY U. S. GEOLOGICAL SURVEY, DENVER, COLORADO 80225, OR RESTON, VIRGINIA 22092
A FOLDER DESCRIBING TOPOGRAPHIC MAPS AND SYMBOLS IS AVAILABLE ON REQUEST

AMHERST SE, COLO.-NEBR.
N4030-W10200/7.5
1971
AMS 5565 II SE-SERIES V877