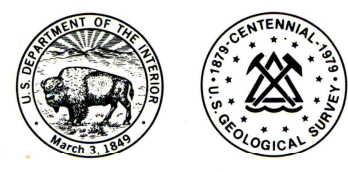


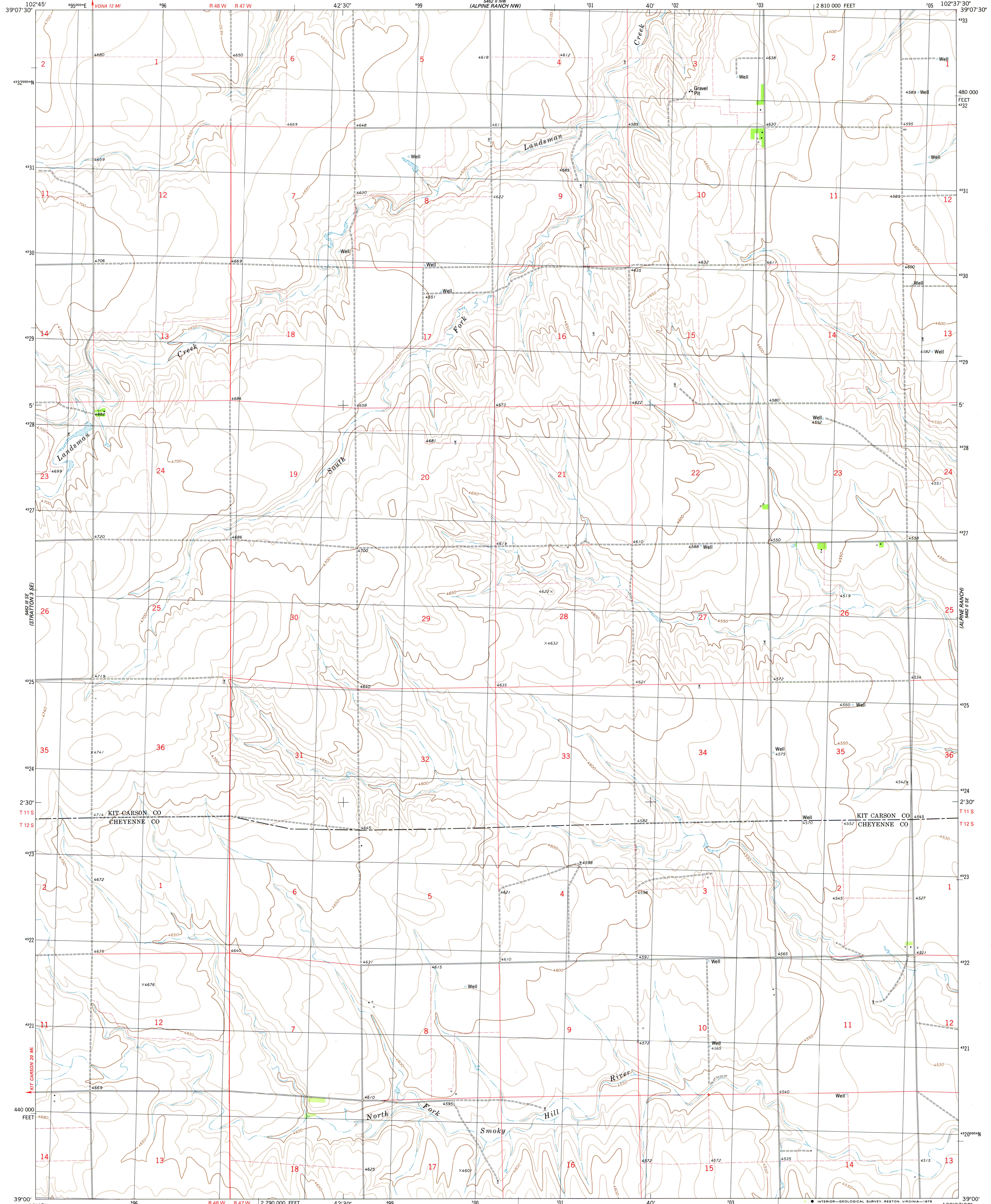
5462 II SW
(STRATTON 3 NE)

UNITED STATES
DEPARTMENT OF THE INTERIOR
GEOLOGICAL SURVEY



ALPINE RANCH SW QUADRANGLE
COLORADO
7.5 MINUTE SERIES (TOPOGRAPHIC)

5462 II SW
(ALPINE RANCH NE)



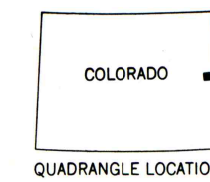
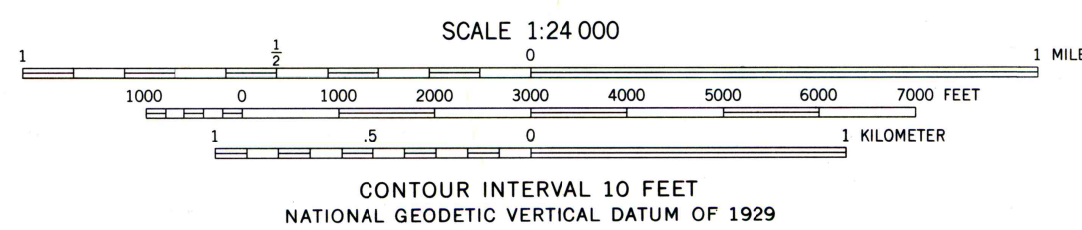
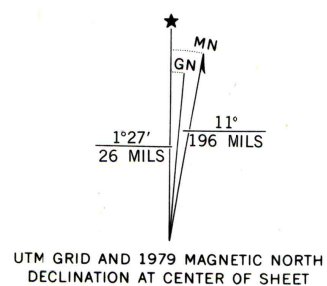
Mapped, edited, and published by the Geological Survey

Control by USGS and NOS/NOAA

Topography by photogrammetric methods from aerial photographs taken 1973. Field checked 1975. Map edited 1979

Projection and 10,000-foot grid ticks: Colorado coordinate system, central zone (Lambert conformal conic) 1000-meter Universal Transverse Mercator grid, zone 13 1927 North American datum

Fine red dashed lines indicate selected fence lines



ROAD CLASSIFICATION

Primary highway, hard surface	Light-duty road, hard or improved surface
Secondary highway, hard surface	Unimproved road
Interstate Route	U. S. Route
	State Route

THIS MAP COMPLIES WITH NATIONAL MAP ACCURACY STANDARDS
FOR SALE BY U. S. GEOLOGICAL SURVEY, DENVER, COLORADO 80225, OR RESTON, VIRGINIA 22092
A FOLDER DESCRIBING TOPOGRAPHIC MAPS AND SYMBOLS IS AVAILABLE ON REQUEST

ALPINE RANCH SW, COLO.
N3900-W10237.5/7.5

1979

DMA 5462 II SW—SERIES V877