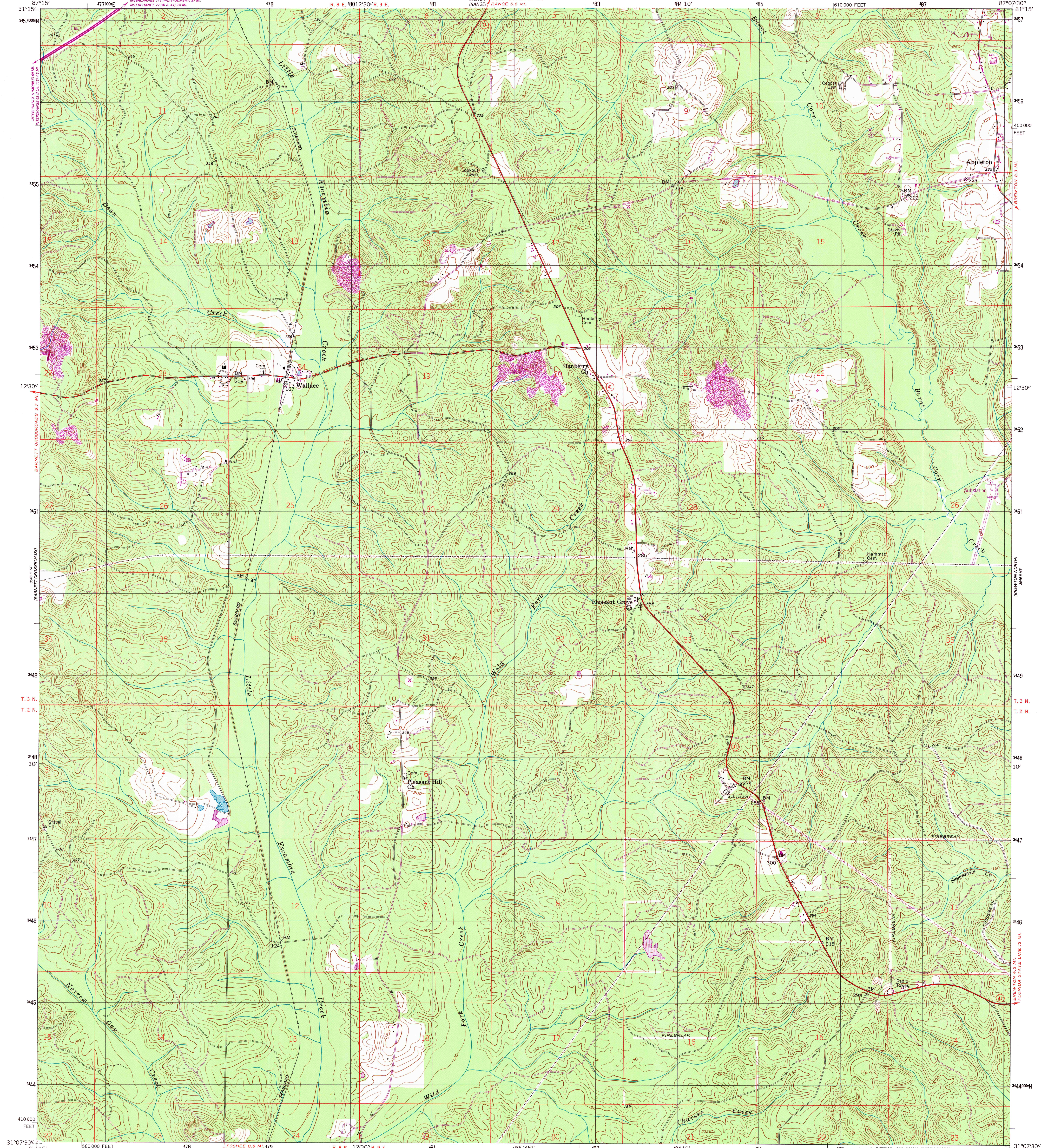


UNITED STATES
DEPARTMENT OF THE INTERIOR
GEOLOGICAL SURVEY

WALLACE QUADRANGLE
ALABAMA—ESCAMBIA CO.
7.5 MINUTE SERIES (TOPOGRAPHIC)



Mapped, edited, and published by the Geological Survey

Control by USGS, NOS/NOAA, and Alabama Geodetic Survey

Topography by photogrammetric methods from aerial photographs taken 1958. Field checked 1960

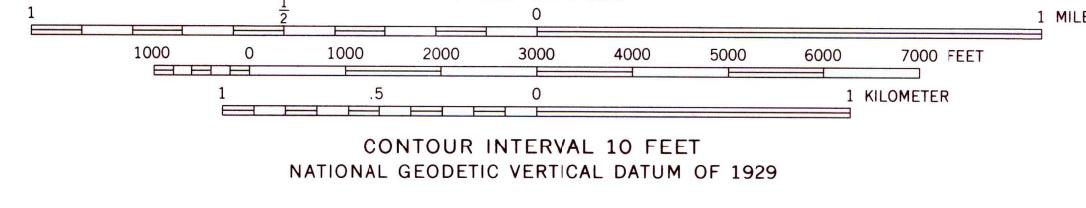
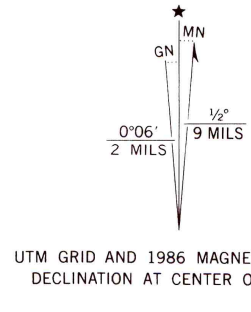
Polyconic projection. 10,000-foot grid ticks based on Alabama coordinate system, west zone 1000-meter Universal Transverse Mercator grid, zone 16

1927 North American Datum
To place on the predicted North American Datum 1983 move the project on lines 15 meters south and 3 meters west as shown by dashed corner ticks

UTM GRID AND 1986 MAGNETIC NORTH DECLINATION AT CENTER OF SHEET

Fine red dashed lines indicate selected fence and field lines where generally visible on aerial photographs. This information is unchecked

Revisions shown in purple and woodland compiled from aerial photographs taken 1984 and other sources. This information not field checked. Map edited 1986



THIS MAP COMPLIES WITH NATIONAL MAP ACCURACY STANDARDS FOR SALE BY U. S. GEOLOGICAL SURVEY, RESTON, VIRGINIA 22092 A FOLDER DESCRIBING TOPOGRAPHIC MAPS AND SYMBOLS IS AVAILABLE ON REQUEST



QUADRANGLE LOCATION

ROAD CLASSIFICATION	
Heavy-duty	Light-duty
Medium-duty	Unimproved dirt
Interstate Route	State Route

WALLACE, ALA.
31087-B2-TF-024

1960
PHOTOREVISED 1986
DMA 3546 II NW—SERIES V844