

Kankakee County ILLINOIS

1:100 000-scale metric topographic map



COUNTY MAP SHOWING

- Contours and elevations in meters
- Highways, roads and other manmade structures
- Water features
- Woodland areas
- Geographic names



GEOLOGICAL SURVEY

1992

Produced by the United States Geological Survey in cooperation with State of Illinois agencies

Compiled from USGS 1:24 000-scale topographic maps dated 1953-1990. See index for dates of individual maps. Planimetry revised from aerial photographs taken 1988 and other source data. Revised information not field checked. Map edited 1992.

1927 North American Datum (NAD 27). Projection and 10 000-meter grid: Universal Transverse Mercator, zone 16. 25 000-foot ticks: Illinois coordinate system, east zone.

The difference between NAD 27 and North American Datum of 1983 (NAD 83) is too small to show at this scale. The values of the shift between the datums for 7.5-minute intersections are given in USGS Bulletin 1875.

There may be private inholdings within the boundaries of the National or State reservations shown on this map.

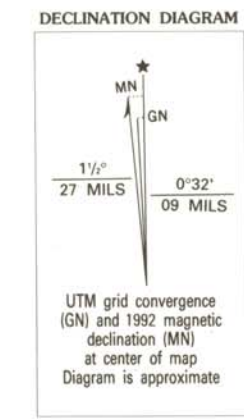
CONTOUR INTERVAL 5 METERS
NATIONAL GEODETIC VERTICAL DATUM OF 1929
ELEVATIONS SHOWN TO THE NEAREST METER

THIS MAP COMPLIES WITH NATIONAL MAP ACCURACY STANDARDS

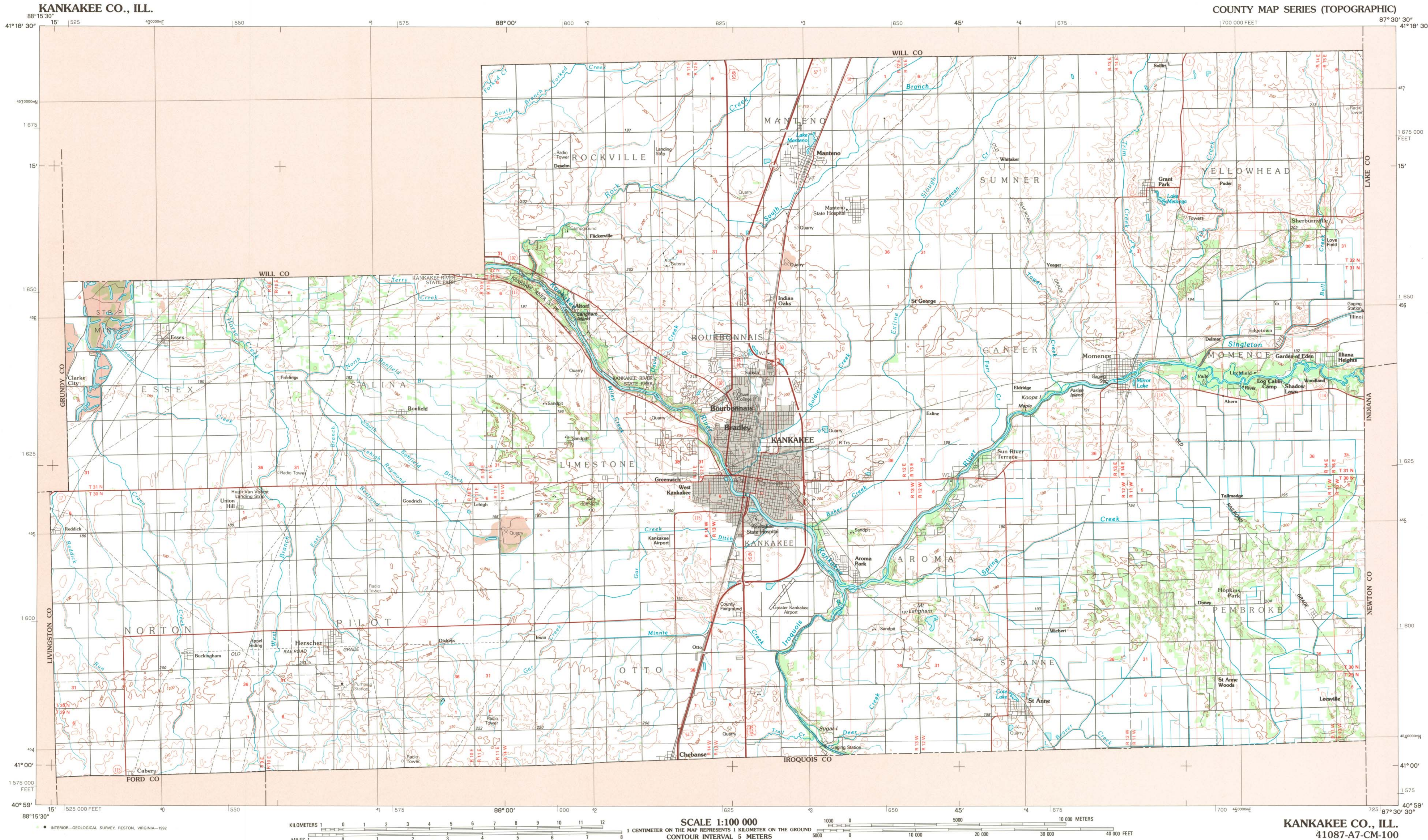
CONVERSION TABLE

Meters	Feet
1	3.2808
2	6.5617
3	9.8425
4	13.1234
5	16.4042
6	19.6850
7	22.9659
8	26.2467
9	29.5276
10	32.8084

To convert meters to feet multiply by 3.2808
To convert feet to meters multiply by 0.3048



FOR SALE BY U. S. GEOLOGICAL SURVEY
DENVER, COLORADO 80225, OR RESTON, VIRGINIA 22092
AND ILLINOIS GEOLOGICAL SURVEY, CHAMPAIGN, ILLINOIS 61820



KANKAKEE CO., ILL.
88° 15' 30" 87° 30' 30" COUNTY MAP SERIES (TOPOGRAPHIC)
41° 18' 30" 41° 18' 30"

LOCATION DIAGRAM

INDEX TO 1:24 000-SCALE MAPS

1	2	3	4	5
6	7	8	9	10
11	12	13	14	15
16	17	18	19	

1 Sumner-1953 (73 PR)
2 Wilton Center-1950
3 Peotone-1950
4 Beecher West-1950
5 Beecher East-1950
6 Essex-1973 (80 PR)
7 Bondage-1973
8 Bourbonnais-1963 (73 PR)
9 Bradley-1964 (73 PR)
10 Momence-1964 (73 PR)

11 Illiana Heights-1964 (73 PR)
12 Buckingham-1973
13 Herscher-1973
14 West Kankakee-1964 (73 PR)
15 Kankakee-1964 (73 PR)
16 St Anne-1964 (73 PR)
17 Levesie-1963 (73 PR)
18 Cabery-1980
19 Piper City NE-1986

PR Photorevised

Topographic Map Symbols

Primary highway, hard surface
Secondary highway, hard surface
Light duty road, principal street, hard or improved surface
Other road or street, trail
Route marker: Interstate, U.S., State
Railroad: standard gage, narrow gage
Bridge: overpass, underpass
Tunnel: road, railroad
Built up area; locality, elevation
Airport; landing field; landing strip
National boundary
State boundary
County boundary
National or State reservation boundary
Land grant boundary
U.S. public lands survey: range, township, section
Range, township, section line: protracted
Power transmission line; pipeline
Dam; dam with lock
Cemetery; building
Windmill; water well; spring
Mine shaft; adit or cave; mine, quarry, gravel pit
Campground; picnic area; U.S. location monument
Ruins; cliff dwelling
Distorted surface: strip mine, lava, sand
Contours: index, intermediate, supplementary
Bathymetric contours: index, intermediate
Stream, lake: perennial, intermittent
Rapids, large and small; falls, large and small
Area to be submerged; marsh, swamp
Land subject to controlled inundation; woodland
Scrub; mangrove
Orchard; vineyard

A pamphlet describing topographic maps is available on request

• INTERIOR-GEOLOGICAL SURVEY, RESTON, VIRGINIA-1992

SCALE 1:100 000
1 CENTIMETER ON THE MAP REPRESENTS 1 KILOMETER ON THE GROUND
CONTOUR INTERVAL 5 METERS

KANKAKEE CO., ILL.
41087-A7-CM-100
1992