

SERIES 1501 AIR SHEET NI 31-3 EDITION 2

- POPULATED PLACES LIEUX HABITÉS
- Over 100,000 ALGER
 - 50,000 to 100,000 SAFI
 - 10,000 to 50,000 SETTAT
 - 2,000 to 10,000 Tiflet
 - Less than 2,000 Oulmes
 - landmark features Pointe repère
- ROADS ROUTES
- Dual highway Autoroute
 - 3 LANES TROIS VOIES
 - All weather, hard surface, two or more lanes wide
 - All weather, loose or light surface, two or more lanes wide
 - All weather, hard surface, one lane wide
 - All weather, loose or light surface, one lane wide
 - For times sec, à surface meuble
 - Cart track; Footpath, trail
 - Chemin d'exploitation; Sentier, piste
 - International; National; Secondary
 - International; National; Secondary
 - Mine; Mosquée
 - Sand; lateral dunes
 - Sable; Dunes latérales
 - Horizontal control point
 - Pointe géodésique
- RAILROADS CHEMINS DE FER
- Normal gauge 1.44m (48'5") Single track Voie unique
 - Voie normale Voies multiples
 - Narrow gauge Voie étroite
- BOUNDARIES LIMITES
- International Limite d'Etat
 - First-order administrative division
 - De division administrative principale
- VEGETATION VÉGÉTATION
- Woods Bois
 - Palm trees; Orchards; Palmiers; Vergers
- HYDROGRAPHY HYDROGRAPHIE
- Well; Spring; Puits; Source
 - Depth curves; Courbes bathymétriques
 - Wrecks; Epaves; Sables
 - Epaves; Vieux; Submergées
 - Rocks; Aiguilles; Sables
 - Rochers; A fleur d'eau; Submergées
 - Limits of danger; Récif
 - Wadi Oued
 - Sabkha; Saibâha
 - Foreshore flats; Rivaiges plats
- TERRAIN ELEVATIONS ALTITUDES DU TERRAIN
- HIGHEST KNOWN elevation is 6109 feet at 36°01'N, 4°26'E.
Le point culminant connu est 6109 pieds à 36°01'N, 4°26'E.
- Spot elevations; normal, critical 1824, 5922
Pointe cotée; normal, critique 1824, 5922
- AERODROMES Military or Civil AÉRODROMES Militaire ou Civil
- EDNA/50's 725
- Field limits with runway pattern
- Limites du champ d'aviation avec réseau des pistes
- EDNA-Name Designation
- 50-length of longest runway to nearest hundreds of feet
- Longueur de la piste principale au cent pied près
- Soft or unimproved surface
- Surface molle ou non aménagée
- Unknown surface
- Surface inconnue
- 725-Elevation Altitude
- Field limits with runway pattern unknown
- Limites du champ avec réseau des pistes inconnu
- Field limits unknown, with runway pattern
- Limites du champ inconnu, avec réseau des pistes
- Field limits and runway pattern unknown
- Limites du champ et réseau des pistes inconnu
- HELIPORT HÉLIPORT
- RADIO AIDS TO NAVIGATION AIDES RADIO À LA NAVIGATION
- VHF OMNI RANGE (VOR) RADIOPHARE OMNIDIRECTIONNEL VHF (VOR)
- VORTAC VOR with DME VOR avec DME
- TACAN
- CONTROLLED AIRSPACE ESPACE AÉRIEN CONTRÔLÉ
- ADIZ ATLANTIC ADIZ
- VISUAL AIDS AND OBSTRUCTIONS AIDES VISUELLES ET OBSTACLES
- Obstruction Obstacle
- 1108-Elevation of obstruction top above sea level
- Altitude du sommet de l'obstacle au-dessus du niveau de la mer
- 1259-Elevation of obstruction top above ground level
- Hauteur au sommet de l'obstacle au-dessus du niveau du sol
- Group obstruction
- Groupe d'obstacles
- Radio facility obstruction
- Obstacle dû à une installation radio
- Power transmission line
- Ligne de haute tension
- Visual ground sign
- Signe visuel sur sol
- Aero light
- Feu aéronautique

CAUTION
AIR INFORMATION CURRENT THROUGH 28 OCTOBER 1977
Consult NOTAMS and Flight Information Publications for the latest air information; the DOD Aeronautical Chart Updating Manual or MOD (U. K.) Aeronautical Chart Amendment document, for other chart revision information.

ATTENTION
THIS CHART CONTAINS MAXIMUM ELEVATION FIGURES (MEF)
The Maximum Elevation Figures shown in quadrangles bounded by ticked lines of latitude and longitude are represented in THOUSANDS and HUNDREDS of feet above mean sea level. The MEF is based on information available concerning the highest known feature in each quadrangle, including terrain and obstructions (towers, towers, antennas, etc.). In areas of extensive unrelieved relief, the MEF is shown by a note spread across the area.
EXAMPLE: 12,500 feet 125

LOCATION DIAGRAM (ONC INDEX SHOWN IN BLUE) (IWC INDEX SHOWN IN BROWN)

Prepared and published by the Defense Mapping Agency Topographic Center, Washington, D. C. Compiled January 1973.

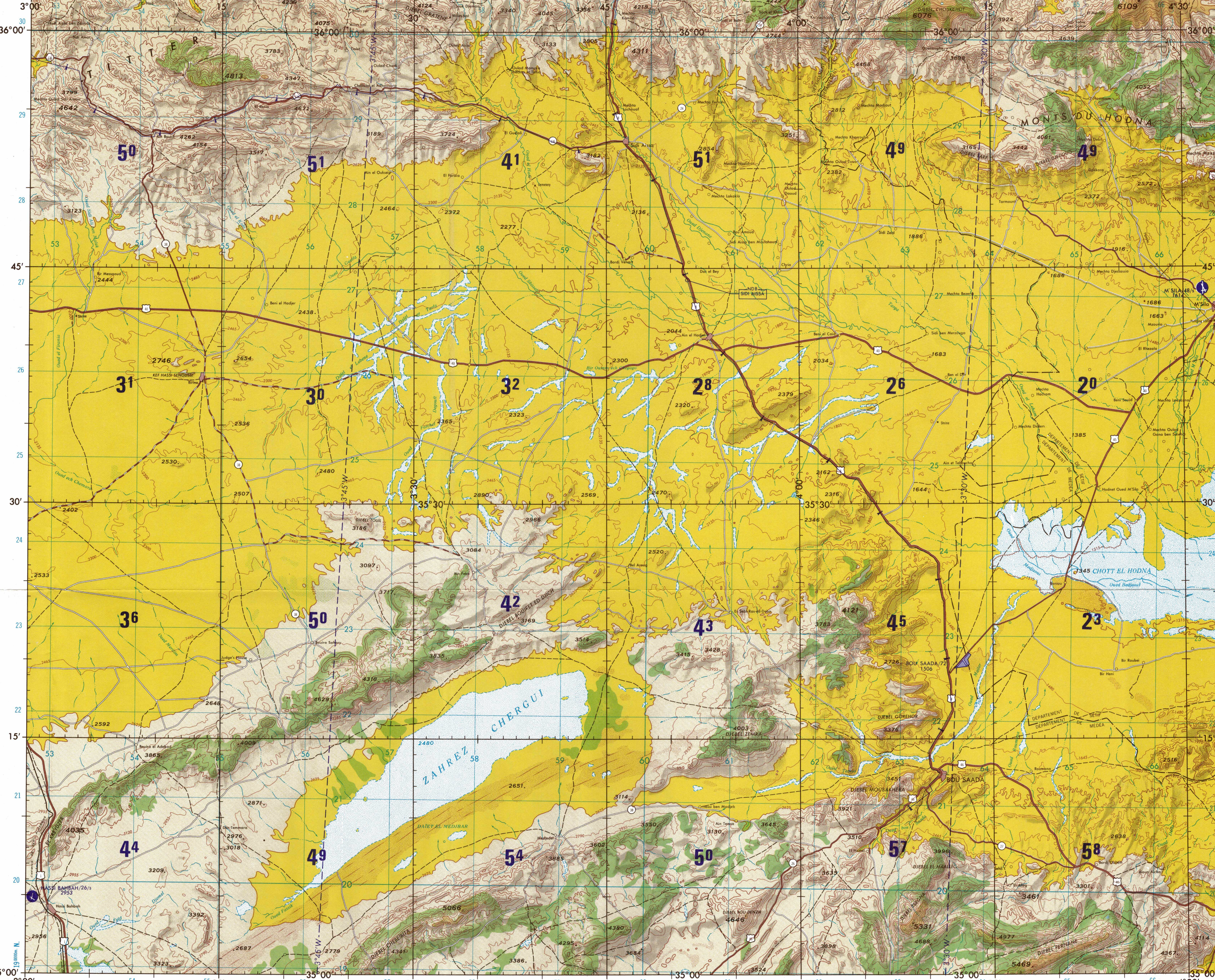


CONVERSION OF ELEVATIONS

FEET	METERS	FEET	METERS
1000	305	10000	3048
9000	274	9000	2743
8000	244	8000	2438
7000	213	7000	2124
6000	183	6000	1829
5000	152	5000	1524
4000	122	4000	1219
3000	91	3000	914
2000	61	2000	610
1500	46	1500	457
1000	31	1000	305

SCALE 1:250,000
BOU SAADA, ALGERIA

SERIES 1501 AIR SHEET NI 31-3 EDITION 2



ELEVATIONS IN FEET ALTITUDES EN PIEDS

JOINT OPERATIONS GRAPHIC (AIR)

Scale 1:250,000

5 10 15 20 25 30 Statute Miles

5 10 15 20 25 30 Nautical Miles

CONTOUR INTERVAL APPROXIMATELY 165 FEET

ÉQUIDISTANCE DES COURBES DE NIVEAU 165 PIEDS ENVIRON

BLUE NUMBERED LINES INDICATE THE 10,000 METER FRENCH LAMBERT GRID, NORTH ALGERIA ZONE, CLARKE 1880 SPHEROID

LES LIGNES CHIFFRÉES EN BLEU CORRESPONDENT AU QUADRILLAGE MYRIAMÉTRIQUE LAMBERT-NORD ALGÈRE, ÉLIPSOÏDE DE CLARKE 1880.

USERS SHOULD REFER CORRECTIONS, ADDITIONS, AND COMMENTS TO THE NIMA OPERATIONAL HELP DISK, 1-800-456-0898 COMMERCIAL 314-261-4884 (524 888-4884) OR WRITE TO: DIRECTOR, NATIONAL IMAGERY AND MAPPING AGENCY, ATTN: NS, MAIL STOP 1-48, 4800 SANGAMORE ROAD, BETHESDA, MD 20816-5002.

SEE USE CHANGE REFERENCE ON THIS SHEET TO DETERMINE METERS

POUR DÉTERMINER LES MÈTRES VOUS DEVEZ CONSULTER LA NOTICE D'UTILISATION DE CE FEUILLET

1. Read sheet number

2. Look for 1973 date on left of page and 1973 date on right of page. Use the 1973 date on the right of page.

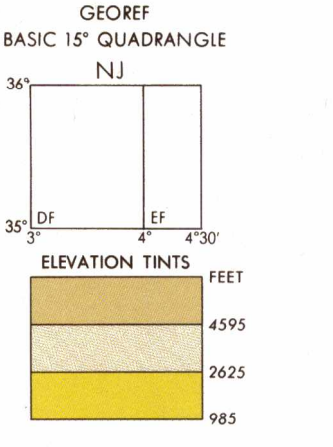
3. Look for 1973 date on left of page and 1973 date on right of page. Use the 1973 date on the right of page.

4. Look for 1973 date on left of page and 1973 date on right of page. Use the 1973 date on the right of page.

5. Look for 1973 date on left of page and 1973 date on right of page. Use the 1973 date on the right of page.

NI 31-3	NI 31-3
63	4
25	5
19	5

- GLOSSARY—GLOSSAIRE
- Br.....puits..... well
 - Bordj.....poste..... post
 - Chart.....carte..... map
 - Djebel.....djaïl..... intermittent wetland
 - Djebel.....mont..... mountain
 - Kel.....colline..... hill
 - Mechto.....forme..... form
 - Months.....mois..... month
 - Oued.....oued..... stream, wadi



RELIABILITY OF THIS GRAPHIC (as determined by standard practice)

PLOTTING ACCURACY	AREA I	AREA II
90% Assurance	within 500 ft.	within 700 ft.
80% Assurance	within 80 ft.	within 100 ft.
70% Assurance	within 100 ft.	within 150 ft.

GRAPHIC FEATURE DATE OF INFORMATION

GRAPHIC FEATURE	AREA I	AREA II
All features	1972	1972

Compiled from best available source

Reprinted by NIMA 06-02

NOTES—NOTES

No obstructions 200 feet or more above ground level are known to exist in this area.

On ne connaît pas dans cette région l'existence d'aucun obstacle dont la hauteur dépasse les 200 pieds hors sol.

CAUTION: Power transmission line information on this graphic is incomplete. Position and alignment of those shown are approximate.

AVIS: Les renseignements de cette carte sur les lignes de transport de force sont incomplets. L'emplacement et le tracé des lignes représentées sont approximatifs.

NSN 7641014101330
NIMA Ref No. 1501ANI3103

ED. NO. 002