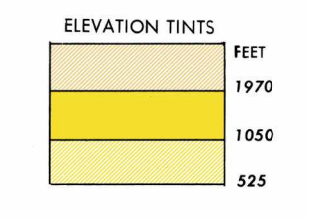
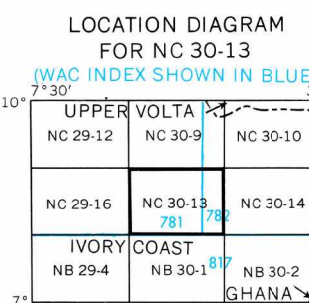


1:250,000 — EDITION 2
KATIOLA, IVORY COAST
1501A NC 30-13

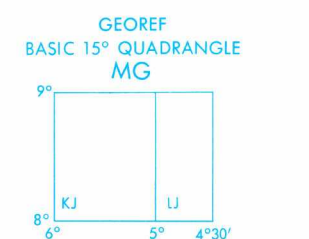


RELIABILITY OF THIS SHEET

CLASS	AREA A	AREA B
Accuracy as related to control of map	± 1:250,000	± 1:250,000
Horizontal positions	within 100 m	within 100 m
Vertical positions	within 100 m	within 100 m
Local use of map information	1:250,000	1:250,000
Scale	1:250,000	1:250,000
Vertical Datum	Mean Sea Level	Mean Sea Level



GLOSSARY
Forêt classée... forest reserve
Ile... island
Mont... mountain

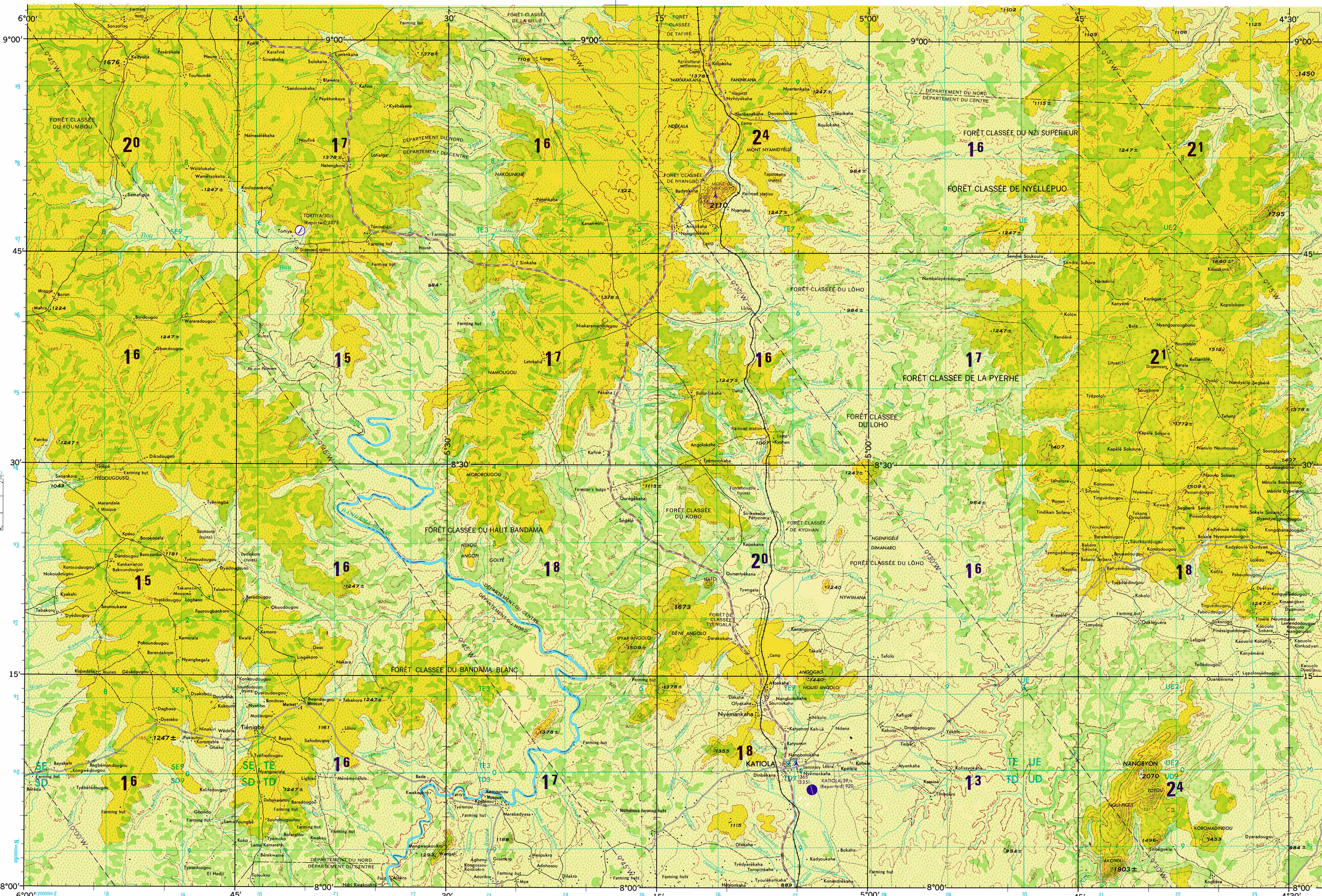


CAUTION
All information current through 15 MARCH 1979
Consult NOTAMS and NOTODM Flight Information Publications for the latest information from the Chart Publishing Manual for other chart revision information.

LINE OF EQUAL MAGNETIC VARIATION FOR 1975
(Annual rate of change = 5' decrease)

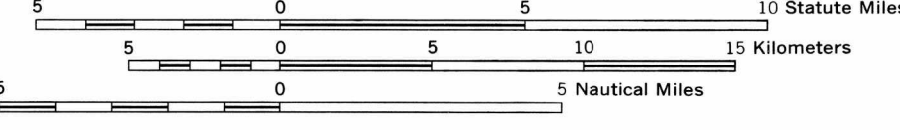


Prepared under the direction of the Defense Intelligence Agency and published by Army Map Service, Corps of Engineers, U.S. Army, Washington, D.C. Compiled in 1966 from best available source materials.



JOINT OPERATIONS GRAPHIC (AIR)

Scale 1:250,000



CONTOUR INTERVAL APPROXIMATELY 135 FEET

TRANSVERSE MERCATOR PROJECTION

BLUE NUMBERED LINES INDICATE THE 10,000 METER UNIVERSAL TRANSVERSE MERCATOR GRID, ZONE 30 CLARK 1860 SPHEROID

GRID ZONE DESIGNATION: 30P

100,000 M SQUARE IDENTIFICATION	SAMPLE POINT: KATIOLA
SE TE UE	1. Read letters identifying 100,000 meter square in which the point lies.
SD TD UD	2. Locate first VERTICAL grid line to LEFT of point and read LARGE figure labeling the line within the top or bottom margin, or on the line itself.
	Estimate tenths from grid line to point; add and read LARGE figure labeling the line within the top or bottom margin, or on the line itself.
	Estimate tenths from grid line to point; add and read LARGE figure labeling the line within the top or bottom margin, or on the line itself.
	Estimate tenths from grid line to point; add and read LARGE figure labeling the line within the top or bottom margin, or on the line itself.

LEGEND

ROADS	RAILROADS	BOUNDARIES	WOODS	ORCHARDS	RICE
All weather	Normal gauge 1 m (3'3 3/4")	International	Scattered trees, low growth	Orchard, plantation, vineyard	Rice
Hard surface, two or more lanes wide	Narrow gauge	Primary administrative	Wooded brushwood		
Loose or light surface, two or more lanes wide		Reservation			
Hard surface, one lane wide		Wooded brushwood			
Loose or light surface, one lane wide					
Fair or dry weather, loose surface					
Cart track, footpath, trail					

AERODROMES (Military or Civil)

Field limits with runway pattern	EDNA—Name
EDNA—Name	50—Length of longest runway to nearest hundreds of feet
50—Length of longest runway to nearest hundreds of feet	5—Soft or unimproved surface
5—Soft or unimproved surface	725—Elevation
725—Elevation	Field limits, with runway pattern unknown
Field limits, with runway pattern unknown	Field limits unknown, with runway pattern
Field limits unknown, with runway pattern	Field limits and runway pattern unknown
Field limits and runway pattern unknown	SEAPLANE BASE
SEAPLANE BASE	SEAPLANE (EMERGENCY)
SEAPLANE (EMERGENCY)	HELIPORT
HELIPORT	RADIO FACILITIES
RADIO FACILITIES	RADIO RANGE VLF/MF
RADIO RANGE VLF/MF	MULTIPLE RADIO FACILITIES
MULTIPLE RADIO FACILITIES	

CONTROLLED AIRSPACE

ADIZ	ATLANTIC ADIZ
ADIZ	ATLANTIC ADIZ
ATLANTIC ADIZ	VISUAL AIDS AND OBSTRUCTIONS
VISUAL AIDS AND OBSTRUCTIONS	1108
1108	OBSTRUCTION
OBSTRUCTION	1108—Elevation of obstruction top, above sea level.
1108—Elevation of obstruction top, above sea level.	(259)—Elevation of obstruction top, above ground level.
(259)—Elevation of obstruction top, above ground level.	Group obstruction
Group obstruction	Radio facility obstruction
Radio facility obstruction	Power transmission line
Power transmission line	Clean station vessel (Normal position)
Clean station vessel (Normal position)	Visual ground sign
Visual ground sign	Aero light, marine light
Aero light, marine light	TERRAIN ELEVATIONS
TERRAIN ELEVATIONS	HIGHEST ELEVATION IS 2110
HIGHEST ELEVATION IS 2110	± following elevation value indicates accuracy is not within 67 feet.

5:79 Printed by Defense Mapping Agency Hydrographic/Topographic Center
Revised by NIMA 04-83

ATTENTION

THIS CHART CONTAINS MAXIMUM ELEVATION FIGURES (MEF)

The Maximum Elevation Figures shown in quadrangles bounded by ticked lines of latitude and longitude are represented in THOUSANDS and HUNDREDS of feet above mean sea level. The MEF is based on information available concerning the highest known feature in each quadrangle, including terrain and obstructions (trees, towers, antennas, etc.) In areas of extensive unreliable relief, the MEF is shown by a wavy space across the area.

125

EXAMPLE: 12,500 feet

NOTES
Only obstructions 200 feet or more above ground level are shown.

NSN 7641014101460
NIMA Ref No 1501ANC3013

1:250,000 — EDITION 2
KATIOLA, IVORY COAST
1501A NC 30-13