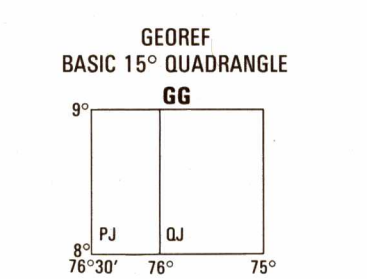
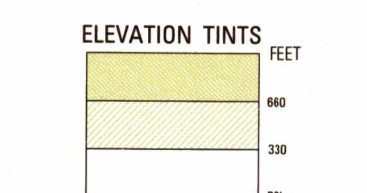


SERIES 1501 AIR SHEET NC 18-14 EDITION 1



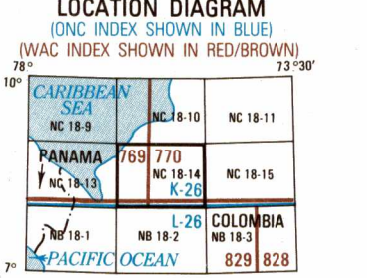
RELIABILITY OF THIS GRAPHIC (as determined by standard practices)

Table with plotting accuracy and graphic feature information for Area I and Area II.

Horizontal Datum: World Geodetic System Vertical Datum: Mean Sea Level Transverse Mercator Projection

Glossary table defining symbols for Carretera, Ciénaga, Desplazamiento, Puma, Quebrada, and Rio.

Conversion of elevations table showing feet to meters and vice versa.



CAUTION AIR INFORMATION CURRENT THROUGH 8 JULY 1991

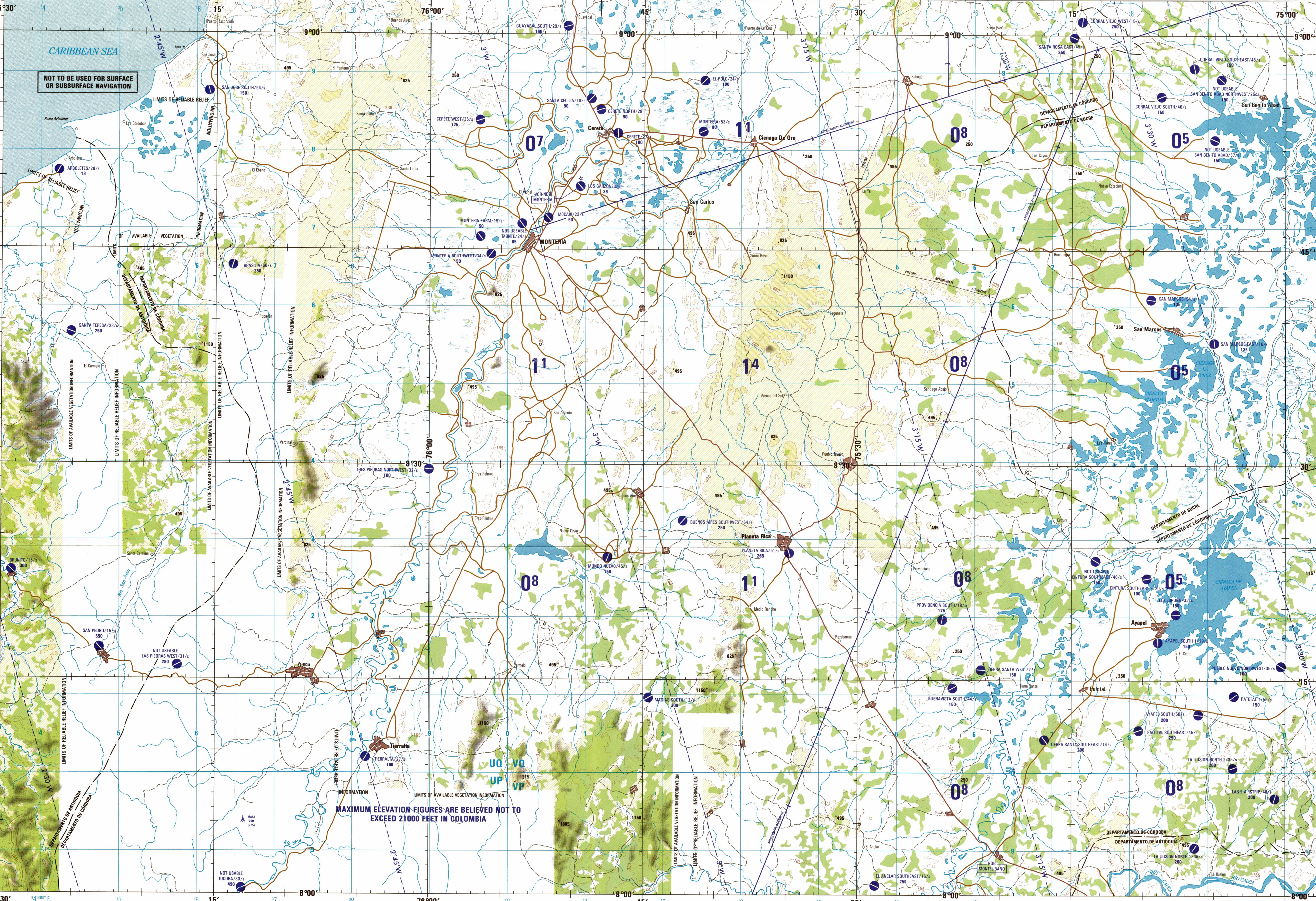
Vertical obstructions, including powerlines, have been restricted from the most reliable sources available.

PROFUNDIDADES EN PIES ELEVACIONES EN PIES

ATTENTION THIS CHART CONTAINS MAXIMUM ELEVATION FIGURES (MEF)

SCALE 1:250,000 MONTERIA, COLOMBIA

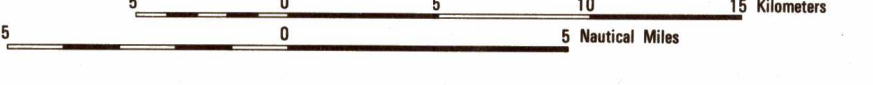
SERIES 1501 AIR SHEET NC 18-14 EDITION 1



MAXIMUM ELEVATION FIGURES ARE BELIEVED NOT TO EXCEED 21000 FEET IN COLOMBIA

JOINT OPERATIONS GRAPHIC (AIR)

SCALE 1:250,000



CONTOUR INTERVAL APPROXIMATELY 330 FEET WITH SUPPLEMENTARY CONTOURS AT 165 FOOT INTERVALS

EQUIDISTANCIA APROXIMADA DE LAS CURVAS DE NIVEL 330 PIES CON CURVAS SUPLEMENTARIAS A INTERVALOS DE 165 PIES

COORDINATE CONVERSION WGS TO INTERNATIONAL DATUM

BLUE NUMBERED LINES INDICATE THE 10,000 METER UNIVERSAL TRANSVERSE MERCATOR GRID, ZONE 18, WORLD GEODETIC SYSTEM ELLIPSOID.

USING SHOULD REFER CORRECTIONS, ADDITIONS, AND COMMENTS TO THE NIMA CUSTOMER HELP BOOK.

AERODROMES (Military or Civil) AERODROMES (Militarios o civiles) EDNA/50/5 Runway pattern known...

CONTROLLED AIRSPACE ESPACIO AEREO CONTROLADO ATLANTIC ADIZ ADIZ (ZONA DE IDENTIFICACION DE DEFENSA AEREA)

RADIO FACILITIES INSTALACIONES DE RADIO RADIO RANGE LF/MF RADIOFARO LF/MF MULTIPLE RADIO FACILITIES INSTALACIONES MULTIPLES

RADIO AIDS TO NAVIGATION RADIOAYUDAS A LA NAVIGACION VHF OMNI RANGE (VOR) RADIOFARO OMNIDIRECCIONAL VOR with DME VOR y DME INSTALADOS

NOTES - NOTAS On this graphic a lane is generally considered as being 2.5 to 3.6 meters (8 to 12 feet) in width.

Vertical information including sample 1,000 meter reference, prepared and published by the Defense Mapping Agency, and other technical details.

Horizontal information including roads, railroads, boundaries, and vegetation symbols and descriptions.